

# St. Elizabeth's School Virtual & Remote Learning Plans

---

August 12, 2020

# Overview

While our expectation is that families will participate in our In-Person Learning plan, we understand that there may be extenuating circumstances that would cause some families to keep their child at home. To provide a continuation of the St. E.'s learning experience, we have developed the St. Elizabeth's Virtual and Remote Learning Plans.

Our **Virtual Learning Plan** is designed for *students who need to stay at home while St. Elizabeth's is open for in-person learning*. It follows the in-person schedule and uses high-resolution webcams and large video screens for two-way communication between at-home students and their teacher. Classes will be recorded and available on SeeSaw for Lower School and Google Classroom for Middle School. In our Virtual Learning Plan, teachers will be teaching live in their classrooms; parents are the primary at-home support for students. Our Virtual Learning Liaison (Sue Swanson) will check-in with at-home students daily about their learning experience and serve as a home-school connection.

Our **Remote Learning Plan** takes place for *all students when school is closed or if a class needs to be quarantined* (provided there are enough healthy teachers). In Remote Learning, students follow the remote schedule that includes shorter classes and more opportunities for breaks and check-ins. Fridays will be half-days for student catch-up and faculty PD. In Remote Learning, Sue Swanson will serve as the Remote Learning Liaison. In this role, her focus will be to connect with families and provide teachers with feedback about remote learning as needed. Our community connections are the fabric of who we are!

Both plans include iPads for K-2 and Chromebooks for 3-8.



# Enrollment in Virtual Learning

Our expectation is that students attend in-person learning. You may select Virtual Learning for one of the reasons listed below:

Please complete [Virtual Learning Request Form](#) by **August 17**. Enrollment in Virtual Learning is through the first semester.

**Medical  
reason**

**Your child has a medical reason (e.g., immunocompromised) for not attending in-person learning**

**Someone  
at home  
at-risk**

**There is someone in your home who is at risk for COVID-19**

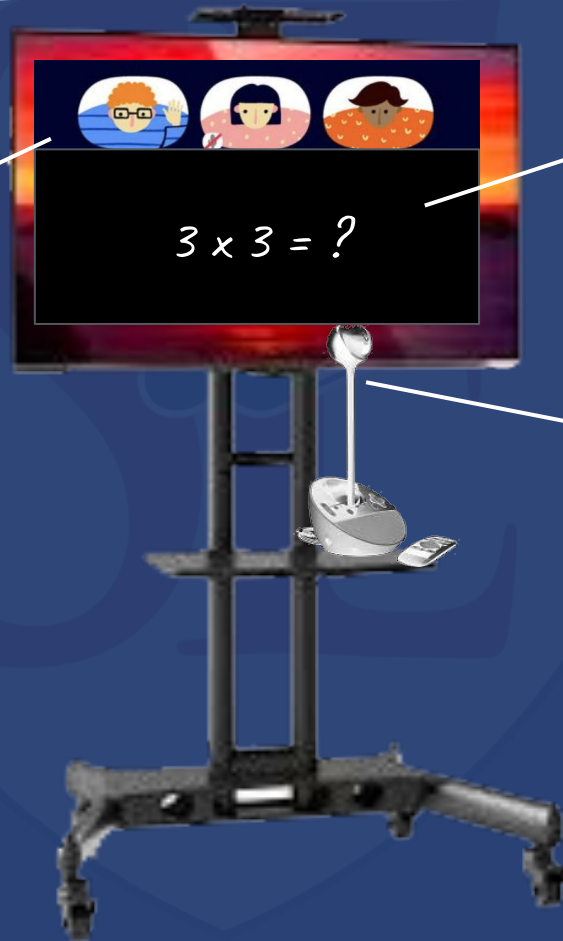
**Other  
circumstance**

**There is another reason other than the aforementioned**

# Virtual Learning Snapshot

*a.k.a. Online learning for those  
who need it while In-Person  
Learning is in session*

Two-way interaction between  
teacher and student



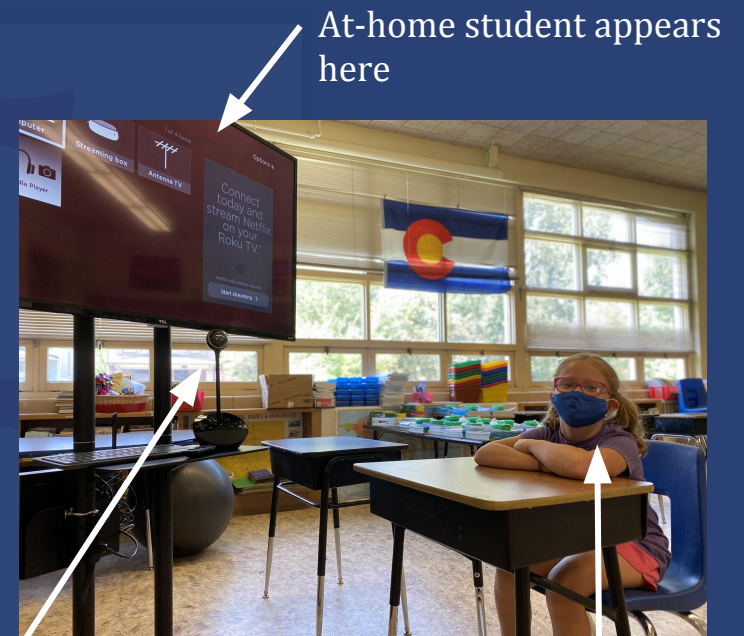
Student can see what is  
projected or connected  
to document camera

Hi-resolution web  
camera enables  
at-home student to  
follow teacher

# Virtual Learning Logistics

## How It Works

- Enrollment is for the semester
- Decision to enroll must be made by **August 17** using the [Virtual Learning Request Form](#)
- Schedule will follow **in-person** schedule
- Schedule with class links will be posted via SeeSaw (K-5) or Google Classroom (6-8)
- Student logs in daily and follows links to classes
- Recordings will be available via SeeSaw or Google Classroom
- Learning materials/books will be available for pick-up/return each week
- Virtual Learning Liaison will serve as a point person between teachers and families
- Parent is primary in-home support for learning



Hi-resolution web camera enables at-home student to follow teacher

Classmate (properly masked)



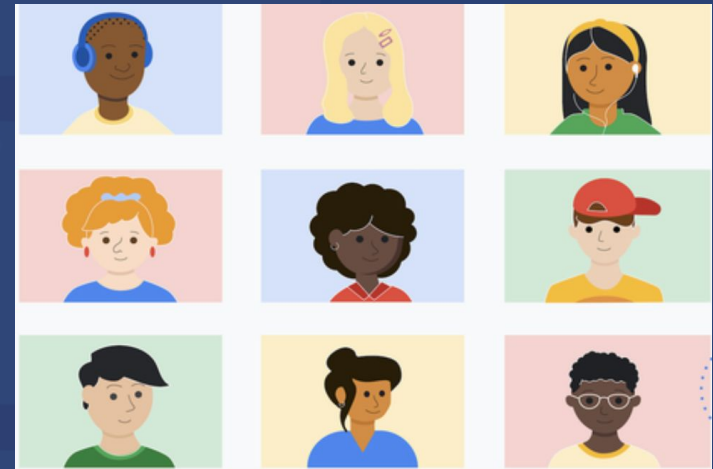
# Remote Learning

*a.k.a. Online learning for **everyone** because school is closed or a class is quarantined*

## How It Works

- ★ All students are engaged online
- ★ Schedule will follow a **remote** schedule
  - Shorter, age-appropriate length of classes
  - Live instruction as much as possible
  - Daily check-ins
  - Half-day Fridays for catch-up and teacher PD
- Schedule with class links will be posted via SeeSaw (K-5) or Google Classroom (6-8) in advance
- Recordings will be available via SeeSaw or Google Classroom
- Learning materials/books will be available for pick-up/return each week
- Remote Learning Liaison will serve as a point person between teachers and families
- iPads for K-2 and Chromebooks for 3-8

### Google Meet/Zoom



*I think I want to  
enroll my child in  
the Virtual Learning  
Plan. What should  
I do next?*

Complete [Virtual Learning Request Form](#) by August 17.